



MARK



跨度由内缘标注改为外缘标注(管脚中间), 尺寸更正为8.4

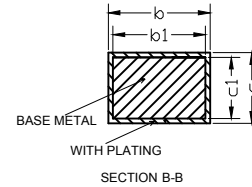
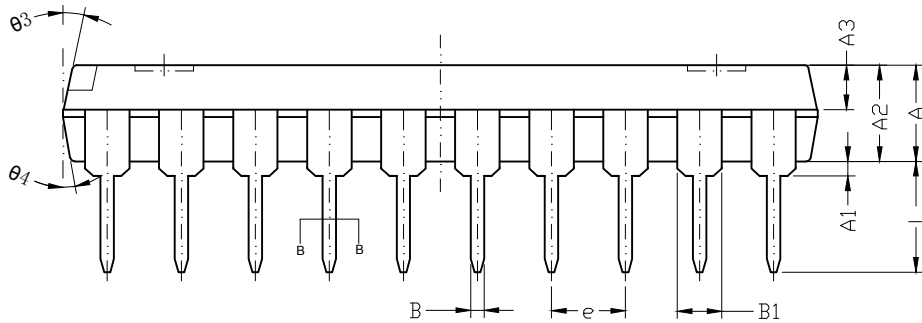
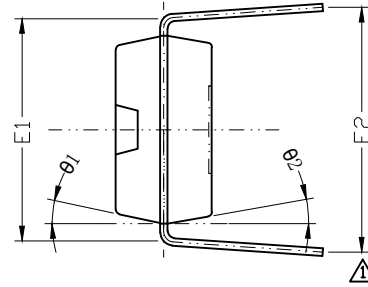
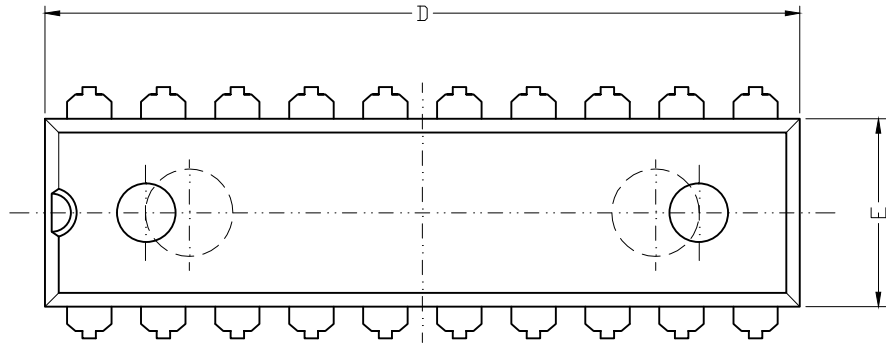


REVISION RECORD

VERSION

REVISERE

B



SYMBOL	MILLIMETER		
	MIN	NOM	MAX
A	3.60	3.80	4.00
A1	0.51	--	--
A2	3.20	3.30	3.40
A3	1.47	1.52	1.57
B	0.44	--	0.53
B1	1.52(BSC)		
b	0.44	--	0.53
b1	0.43	0.46	0.48
c	0.25	--	0.31
c1	0.24	0.25	0.26
D	25.7	25.9	26.1
E	6.35	6.55	6.75
E1	7.62(BSC)		
E2	8.00	8.40	8.80
e	2.54(BSC)		
L	3.00	--	3.60
theta 1	8°	~	14°
theta 2	6°	~	12°
theta 3	8°	~	14°
theta 4	6°	~	12°

技术说明:

- 1) LEADFRAME MATERIAL: COPPER;
引线框架材料: 铜;
- 2) LEADFRAME THICKNESS: 0.254mm;
引线框架厚度: 0.254mm;
- 3) BOTH PACKAGE LENGTH AND WIDTH DO NOT INCLUDE MOLD FLASH;
塑封体长度及宽度尺寸不包括塑封溢胶;
- 4) REFERENCE: JEDEC MS-013, MS-012.
参考标准: JEDEC MS-013, MS-012.

THIRD ANGLE PROJECTION		SCALE	UNIT	mm	TITLE	
TOLERANCE		DATE	2022-12-06		DIP20L产品成型图	
		DESIGNER	CHECKER	APPROVER	DWG.NO.	MT-PD-049
		陈露			VERSION	B 第1页 共1页
		2022-12-06				