



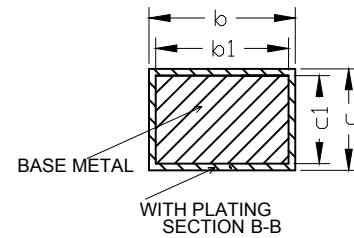
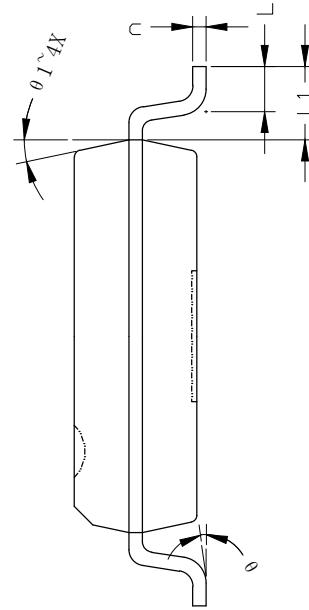
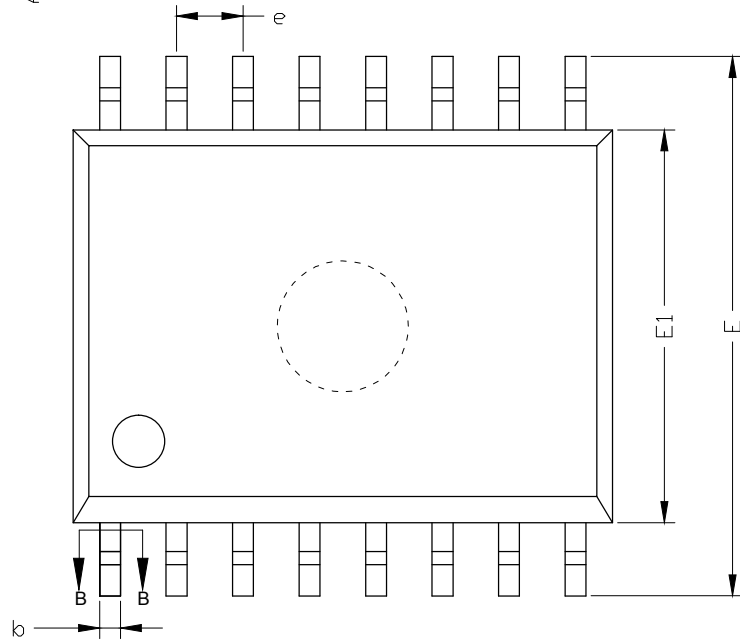
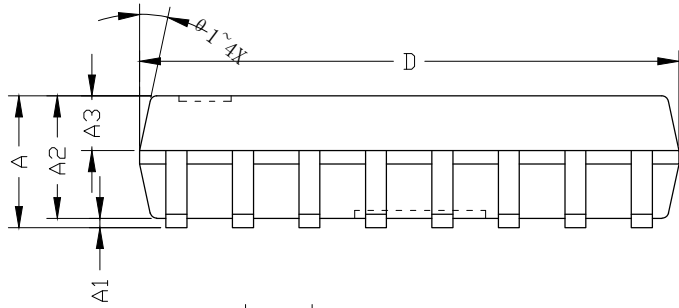
MARK



REVISION RECORD

REVISERE

APPROVER



SYMBOL	MILLIMETER		
	MIN	NOM	MAX
A	--	--	2.615
A1	0.125	--	0.225
A2	2.29	2.34	2.39
A3	0.993	1.043	1.093
b	0.35	--	0.45
b1	0.34	0.38	0.44
c	0.25	--	0.29
c1	0.24	0.25	0.26
D	10.20	10.30	10.40
E	10.106	10.306	10.506
E1	7.40	7.50	7.60
e	1.27(BSC)		
L	0.75	--	0.97
L1	1.403(REF)		
theta	0°	~	8°
theta 1	6°	~	15°

技术说明:

- 1) LEADFRAME MATERIAL: COPPER;
引线框架材料: 铜;
- 2) LEADFRAME THICKNESS: 0.254mm;
引线框架厚度: 0.254mm;
- 3) BOTH PACKAGE LENGTH AND WIDTH DO NOT INCLUDE MOLD FLASH;
塑封体长度及宽度尺寸不包括塑封溢胶;
- 4) REFERENCE: JEDEC MS-013, MS-012.
参考标准: JEDEC MS-013, MS-012.

	SCALE	UNIT	mm	TITLE
	DATE	2022-02-07		SOP16L(W)产品成型图(2)
TOLERANCE		DESIGNER	CHECKER	APPROVER
		陈露		
		2022-02-07		
		DWG.NO.	MT-PD-092	
		VERSION	A	第1页 共1页