



MARK



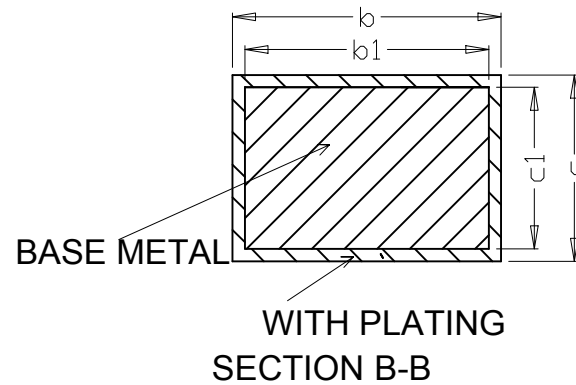
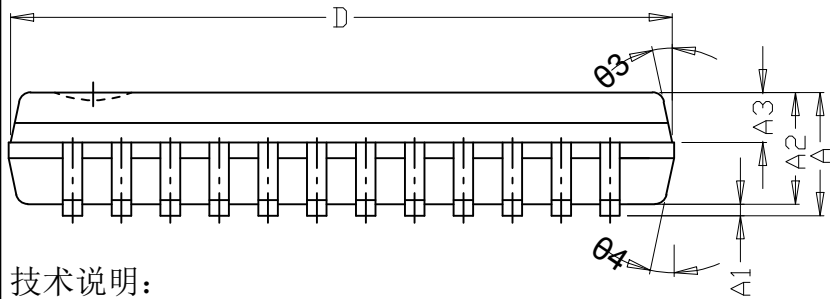
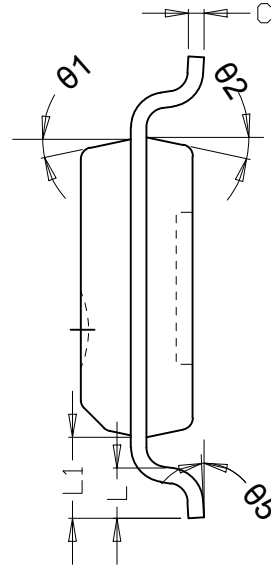
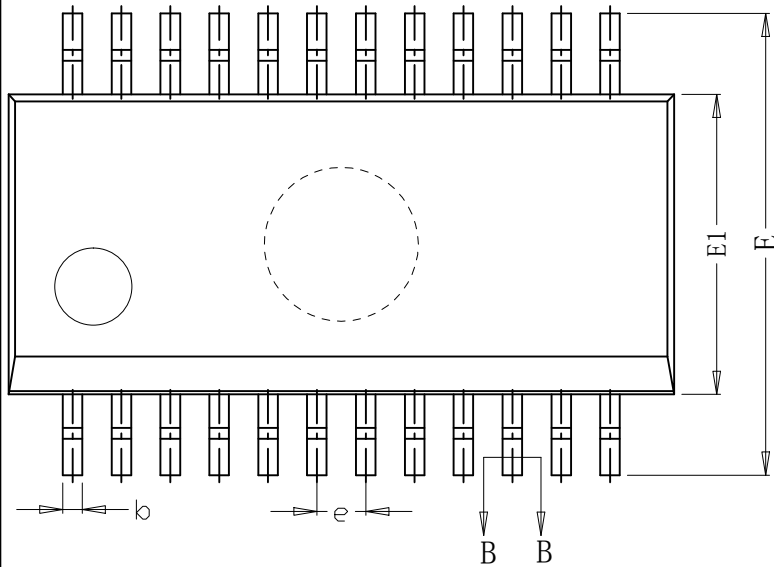
调整b、E1的MIN尺寸



REVISION RECORD

VERSION

REVISERE



SYMBOL	MILLIMETER		
	MIN	NOM	MAX
A	--	--	1.70
A1	0.10	0.15	0.21
A2	1.40	1.45	1.50
A3	0.60	0.65	0.70
$\Delta$ b	0.21	--	0.29
b1	0.20	0.24	0.27
c	0.18	--	0.23
c1	0.16	0.19	0.21
D	8.45	8.60	8.75
E	5.80	6.00	6.20
$\Delta$ E1	3.80	3.85	3.90
e	0.635(BSC)		
L	0.58	0.60	0.63
L1	1.05(BSC)		
$\theta 1$	8°	~	15°
$\theta 2$	8°	~	15°
$\theta 3$	8°	~	15°
$\theta 4$	8°	~	15°
$\theta 5$	0°	~	6°

技术说明:

- LEADFRAME MATERIAL: COPPER;  
引线框架材料: 铜;
- LEADFRAME THICKNESS: 0.203mm;  
引线框架厚度: 0.203mm;
- BOTH PACKAGE LENGTH AND WIDTH DO NOT INCLUDE MOLD FLASH;  
塑封体长度及宽度尺寸不包括塑封溢胶;
- REFERENCE: JEDEC MS-013, MS-012.  
参考标准: JEDEC MS-013, MS-012.

	SCALE	UNIT	mm	TITLE	
	DATE	2023-09-18		QSOP24L产品成型图	
TOLERANCE		DESIGNER	CHECKER	APPROVER	
		陈露			DWG.ND. MT-PD-039
		2023-09-18			VERSION B 第1页 共1页