



MARK

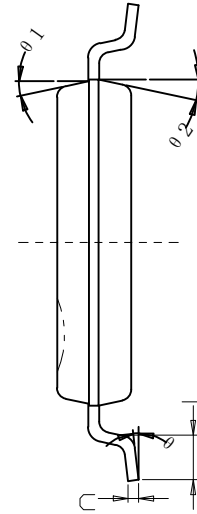
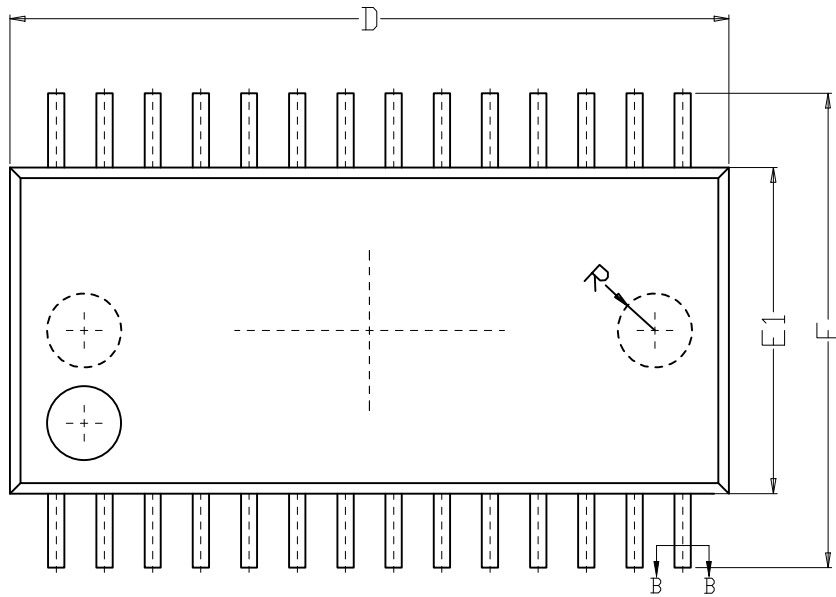


更新A2尺寸

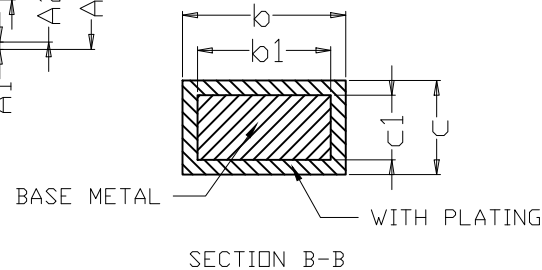
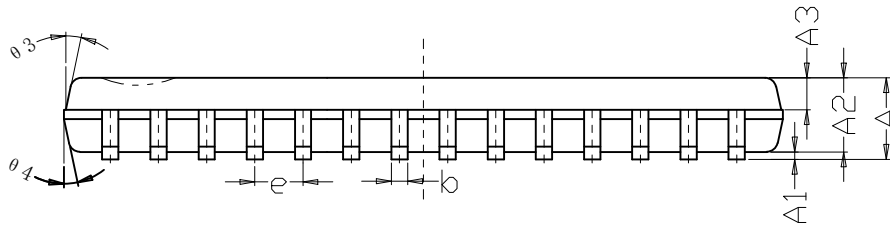
REVISION RECORD

REVISERE

APPROVER



SYMBOL	MILLIMETER		
	MIN	NOM	MAX
A	--	--	1.20
A1	0.05	0.10	0.15
A2	0.80	Δ 1.00	1.05
A3	0.38	0.43	0.48
b	0.17	--	0.27
b1	0.16	0.22	0.26
c	0.13	--	0.15
c1	0.12	0.13	0.14
D	9.60	9.70	9.80
E	6.20	6.40	6.60
E1	4.30	4.40	4.50
e	0.65(BSC)		
L	0.45	0.60	0.75
θ	0°	~	8°
$\theta 1$	10°	~	14°
$\theta 2$	10°	~	14°
$\theta 3$	10°	~	14°
$\theta 4$	10°	~	14°
R	0.4	0.5	0.6



技术说明:

- LEADFRAME MATERIAL: COPPER;
引线框架材料: 铜;
- LEADFRAME THICKNESS: 0.127mm;
引线框架厚度: 0.127mm;
- BOTH PACKAGE LENGTH AND WIDTH DO NOT INCLUDE MOLD FLASH;
塑封体长度及宽度尺寸不包括塑封溢胶;
- REFERENCE: JEDEC MS-013, MS-012。
参考标准: JEDEC MS-013, MS-012。

SCALE	UNIT	mm	TITLE
DATE	2024-09-09		TSSOP28L 产品成型图
DESIGNER	CHECKER	APPROVER	
曾怡			DWG.NO. MT-PD-199
2024-09-09			VERSION B 第1页 共1页