



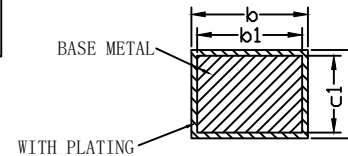
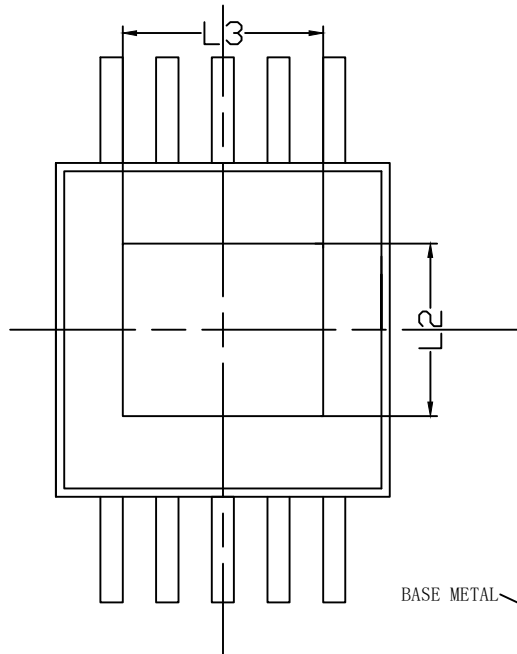
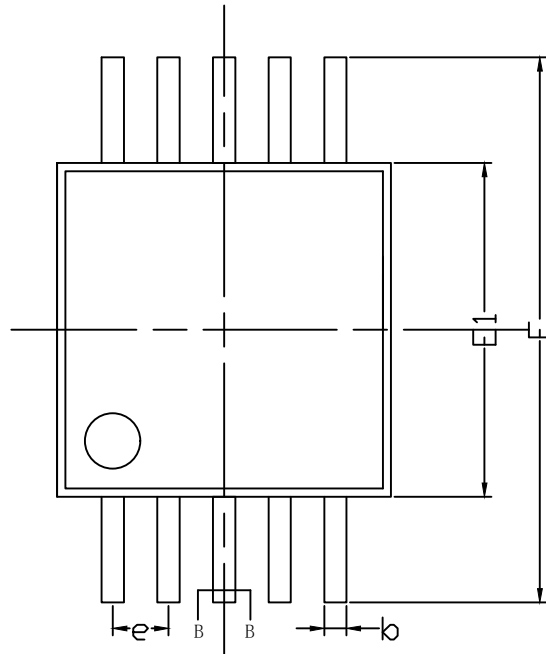
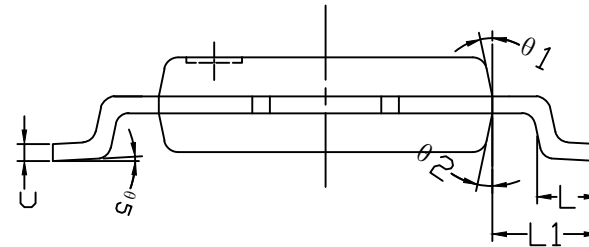
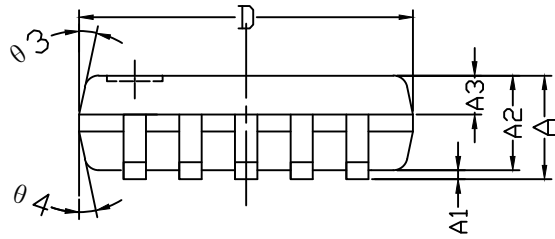
MARK



REVISION RECORD

VERSION

REVISERE



SECTION B-B

SYMBOL	MILLIMETER		
	MIN	NOM	MAX
A	0.92	0.93	0.94
A1	0.03	0.08	0.13
A2	0.80	0.85	0.90
A3	0.299	0.349	0.399
b	0.13	--	0.27
b1	0.12	0.18	0.24
c	0.152	--	0.192
c1	0.142	0.152	0.162
D	2.90	3.00	3.10
E	4.80	4.90	5.00
E1	2.90	3.00	3.10
e	0.50(BSC)		
L	0.45	0.55	0.65
L1	0.95(BSC)		
L2	1.55(BSC)		
L3	1.80(BSC)		
theta 1	10°	~	14°
theta 2	10°	~	14°
theta 3	10°	~	14°
theta 4	10°	~	14°
theta 5	1°	~	5°

技术说明:

- 1) LEADFRAME MATERIAL: COPPER; 引线框架材料: 铜;
- 2) LEADFRAME THICKNESS: 0.152mm; 引线框架厚度: 0.152mm;
- 3) BOTH PACKAGE LENGTH AND WIDTH DO NOT INCLUDE MOLD FLASH;  
塑封体长度及宽度尺寸不包括塑封溢胶;
- 4) REFERENCE: JEDEC MS-013, MS-012.  
参考标准: JEDEC MS-013, MS-012.

THIRD ANGLE PROJECTION		SCALE	UNIT	mm	TITLE
TOLERANCE		DATE	2023-12-26		EMSOP10L产品成型图
		DESIGNER	CHECKER	APPROVER	
		曾怡			DWG.NO. MT-PD-190
		2023-12-26			VERSION A 第1页 共1页