



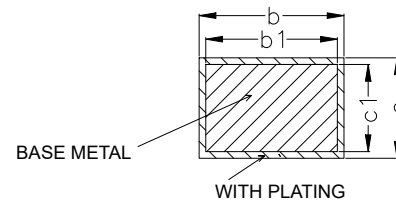
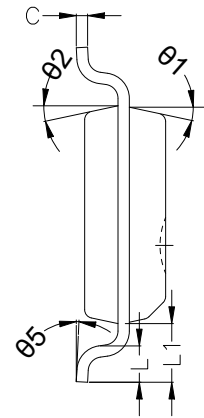
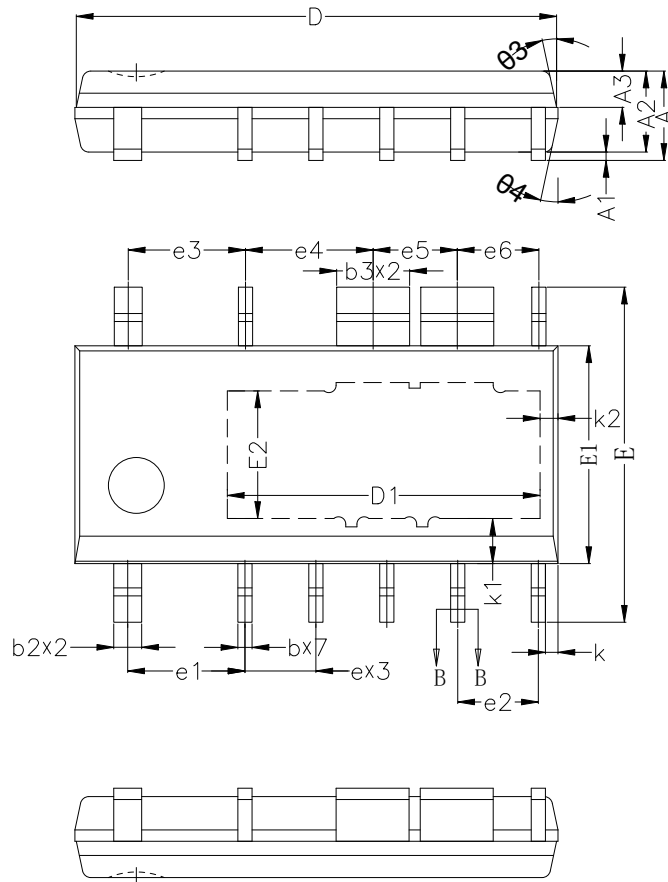
MARK



REVISION RECORD

VERSION

REVISERE



SECTION B-B

SYMBOL	MILLIMETER		
	MIN	NOM	MAX
A	--	--	1.70
A1	0.10	0.15	0.21
A2	1.40	1.45	1.50
A3	0.60	0.65	0.70
b	0.21	--	0.29
b1	0.20	0.24	0.27
b2	0.46	--	0.54
b3	1.27	--	1.35
c	0.18	--	0.23
c1	0.16	0.19	0.21
D	8.45	8.60	8.75
D1	5.55	5.60	5.65
E	5.80	6.00	6.20
E1	3.80	3.85	3.90
E2	2.79	2.84	2.89
e	1.270(BSC)		
e1	2.100(BSC)		
e2	1.443(BSC)		
e3	2.100(BSC)		
e4	2.285(BSC)		
e5	1.507(BSC)		
e6	1.461(BSC)		
L	0.58	0.60	0.63
L1	1.05(BSC)		
k	0.225(BSC)		
k1	0.808(BSC)		
k2	0.321(BSC)		
theta 1	8°	~	15°
theta 2	8°	~	15°
theta 3	8°	~	15°
theta 4	8°	~	15°
theta 5	0°	~	6°

## 技术说明:

- 1) LEADFRAME MATERIAL: COPPER;  
引线框架材料: 铜;
- 2) LEADFRAME THICKNESS: 0.203mm;  
引线框架厚度: 0.203mm;
- 3) BOTH PACKAGE LENGTH AND WIDTH DO NOT INCLUDE MOLD FLASH;  
塑封体长度及宽度尺寸不包括塑封溢胶;
- 4) REFERENCE: JEDEC MS-013, MS-012.  
参考标准: JEDEC MS-013, MS-012.

SCALE	UNIT	mm	TITLE	
DATE	2025-07-24		ESOP11L产品成型图	
DESIGNER	CHECKER	APPROVER	DWG.NO.	MT-PD-342
张金萍 2025-07-24			VERSION	A 第1页 共1页