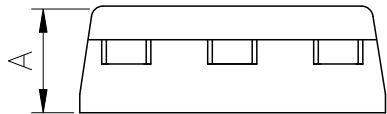
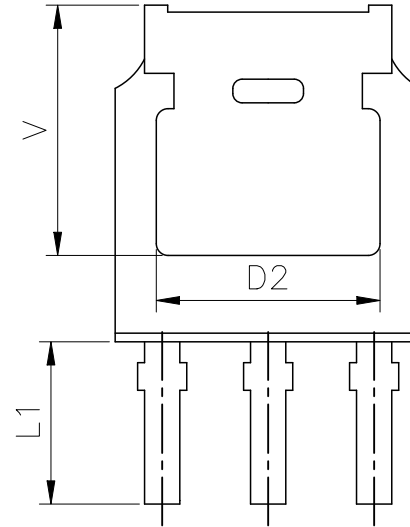
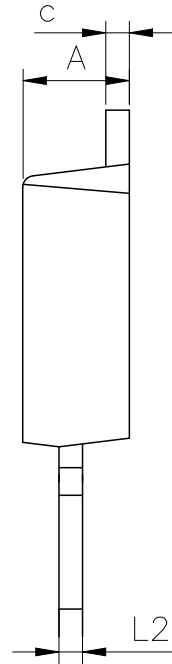
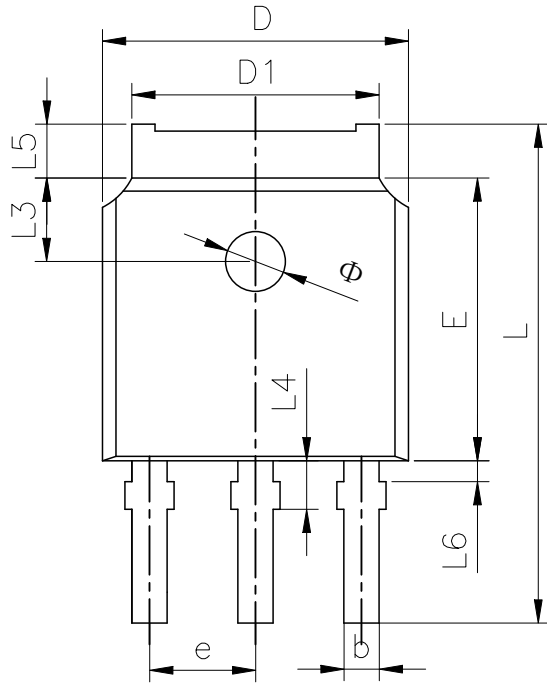




MARK	MARK	REVISION RECORD	REVISERE	APPROVER
△				
△				



SYMBOL	MILLIMETER		
	MIN	NOM	MAX
A	2.20	2.30	2.40
b	0.66	0.76	0.86
c	0.46	0.51	0.58
D	6.50	6.60	6.70
D1	5.10	5.33	5.46
D2	4.83 REF.		
E	6.00	6.10	6.20
e	2.19	2.29	2.39
L	10.50	10.70	10.90
L1	3.50 REF.		
L2	0.508BSC		
L3	1.80 REF.		
L4	0.95	1.05	1.15
L5	0.90	--	1.25
L6	0.15	--	0.75
Φ	1.10	--	1.30
V	5.40 REF.		

技术说明:

- 1) LEADFRAME MATERIAL: COPPER;
引线框架材料: 铜;
- 2) LEADFRAME THICKNESS: 0.508mm;
引线框架厚度: 0.508mm;
- 3) BOTH PACKAGE LENGTH AND WIDTH DO NOT INCLUDE MOLD FLASH;
塑封体长度及宽度尺寸不包括塑封溢胶;
- 4) REFERENCE: JEDEC MS-013, MS-012.
参考标准: JEDEC MS-013, MS-012.

NO.	NAME	Q'TY	MATERIAL	DIMENSION			FINISH	HARDING	REMARK
 THIRD ANGLE PROJECTION				SCALE	UNIT	mm	TITLE TO-251-3L产品成型图(3.50mm)		
				DATE	2020-07-02				
TOLERANCE				DESIGNER	CHECKER	APPROVER	DWG.NO.	MT-PD-016	
				陈露			VERSION	c	
				2020-07-02					