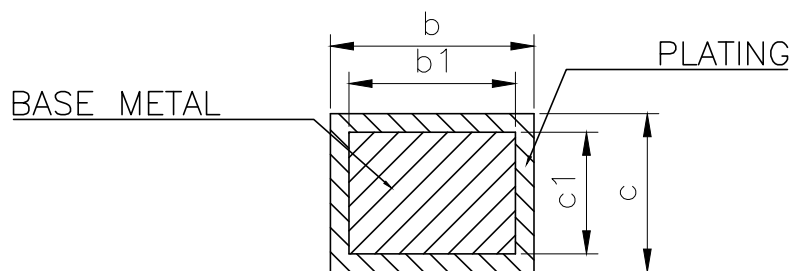
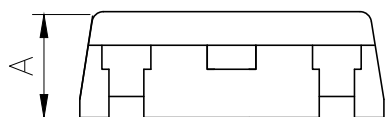
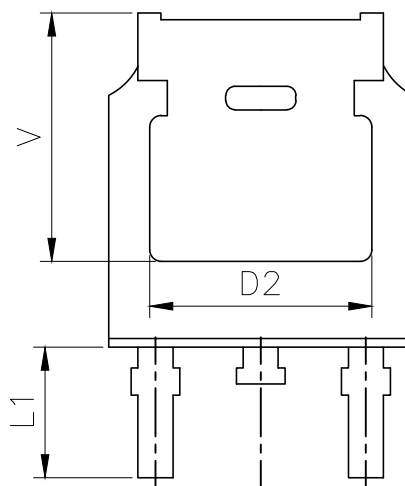
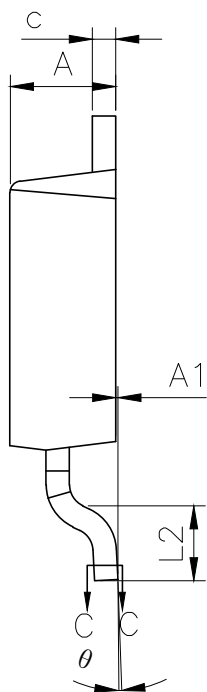
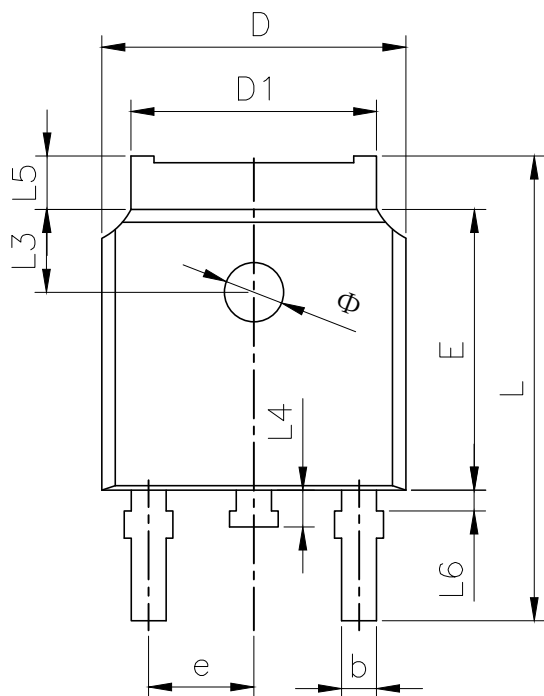




MARK	MARK
△	
△	



VIEW C-C

SYMBOL	MILLIMETER		
	MIN	NOM	MAX
A	2.20	2.30	2.40
A1	0.00	--	0.127
b	0.66	--	0.86
b1	0.65	0.76	0.81
D	6.50	6.60	6.70
D1	5.10	5.33	5.46
c	0.47	--	0.60
c1	0.46	0.51	0.56
D2	4.83 REF.		
E	6.00	6.10	6.20
e	2.186	2.286	2.386
L	9.80	10.10	10.40
L1	2.90 REF.		
L2	1.40	1.50	1.60
L3	1.80 REF.		
L4	0.60	0.80	1.00
L5	0.90	--	1.25
L6	0.15	--	0.75
Φ	1.10	--	1.30
θ	0°	--	8°
V	5.40 REF.		

技术说明:

- 1) LEADFRAME MATERIAL: COPPER;  
引线框架材料: 铜;
- 2) LEADFRAME THICKNESS: 0.508mm;  
引线框架厚度: 0.508mm;
- 3) BOTH PACKAGE LENGTH AND WIDTH DO NOT INCLUDE MOLD FLASH;  
塑封体长度及宽度尺寸不包括塑封溢胶;
- 4) REFERENCE: JEDEC MS-013, MS-012.  
参考标准: JEDEC MS-013, MS-012.

NO.	NAME	Q'TY	MATERIAL	DIMENSION		FINISH	HARDING	REMARK
 THIRD ANGLE PROJECTION	SCALE			UNIT	mm	TITLE		
	DATE	2020-07-02				TO-252-2L产品成型图		
TOLERANCE		DESIGNER	CHECKER	APPROVER				
		陈露				DWG.NO.	MT-PD-010	
		2020-07-02				VERSION	D	